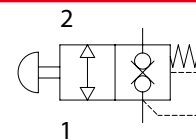
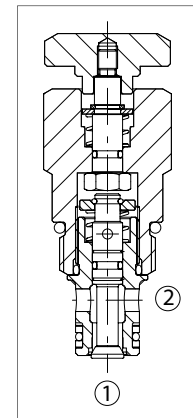
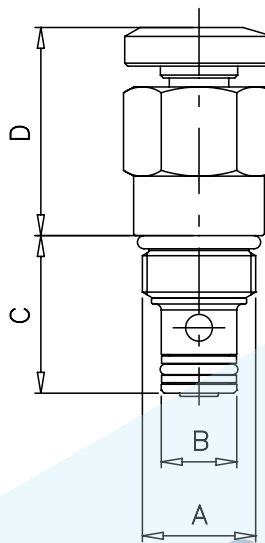
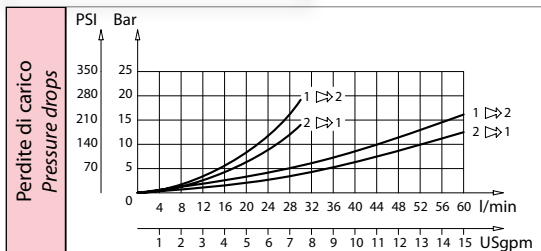


VEM

Valvole di emergenza manuale
Manual emergency valves



Dati tecnici Technical data	
Viscosità fluido Fluid viscosity	10-500 mm ² /s 45 to 2000 ssu (6 to 420 cSt)
Classe di contaminazione Filtration	ISO code 16/13 SAE class 4 or better
Temperatura fluido Fluid temperature	-20°C +80°C -4°F + 176°F
Temperatura ambiente Ambient temperature	-20°C +50°C -4°F +122°F

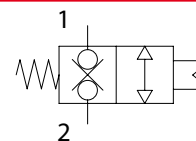


Caratteristiche tecniche Technical performances									
Codice Code	A	Portata Max Max flow l/min - USgpm	Pressione Max Max pressure bar/PSI	B	C	D	Peso approssimativo Approx weight Kg / lb	Coppia di serraggio Tightening torque Nm / lbf ft	Cavità Cavity
VEM6	3/4 - 16UNF	30 (8)	320 (4500)	12,7 (0.5)	26,5 (1.04)	35 (1.38)	0,12 (0.27)	25-30 (19-22)	SAE8/2
VEM10	7/8 - 14UNF	50 (13)		15,87 (0.62)	32,5 (1.28)	43,5 (1.71)	0,20 (0.44)	41-47 (30-35)	SAE10/2

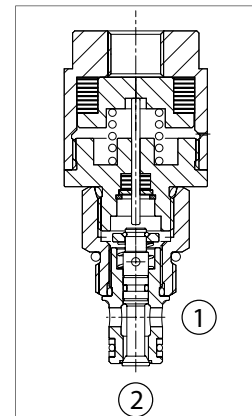
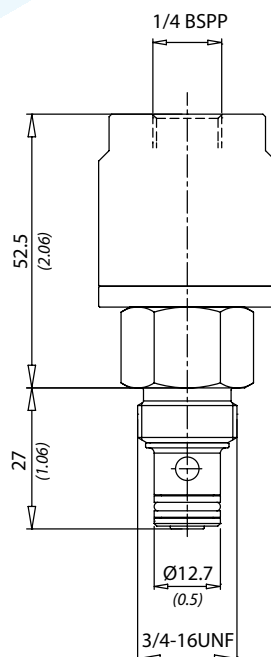
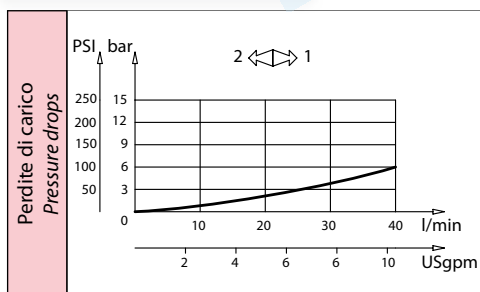
Codice ordinazione Ordering code	
VEM - X	
X	Dimensione / Size
6	3/4 - 16UNF
10	7/8 - 14UNF

VPN6

Valvole pneumatiche
Pneumatic valves



Dati tecnici Technical data	
Viscosità fluido Fluid viscosity	10-500 mm ² /s 45 to 2000 ssu (6 to 420 cSt)
Classe di contaminazione Filtration	ISO code 16/13 SAE class 4 or better
Temperatura fluido Fluid temperature	-20°C +80°C -4°F + 176°F
Temperatura ambiente Ambient temperature	-20°C +50°C -4°F +122°F



Caratteristiche tecniche Technical performances						
Codice Code	Portata Max Max flow l/min - USgpm	Pressione Max Max pressure bar/PSI	Peso approssimativo Approx weight Kg / lb	Coppia di serraggio Tightening torque Nm / lbf ft	Cavità Cavity	Pressione di pilotaggio Pilot pressure bar / PSI
VPN6	40 (10)	350 (5000)	0,16 (0.35)	25-30 (19-22)	SAE8/2 (2)	4/15 (58/218)

Codice ordinazione Ordering code	
VPN6	